

Elite Valve

elitevalve.com

Product Overview

Product Brochure



Customized valve solutions
for the toughest applications.





05

Introduction

- 5 About Elite Valve
 - 6 Engineered Solutions
 - 8 Industries Served
-

10

Products

- 10 Knife Gate Valves
- 14 Butterfly Valves
- 15 Ball Valves
- 16 Gate, Globe and Check Valves
- 17 Plug Valves
- Strainers
- Actuation and Accessories
- 18 Notes



About Elite Valve

Elite Valve is a Canadian valve manufacturer that utilizes up to date equipment and in-house engineering to offer a range of high-quality process valves to meet the demanding needs of industries.

As a customer-centric organization, we attribute our success to our sales personnel, engineers and trained staff who are here to help you with all your valving needs.

Elite Valve is an ISO 9001 registered company. We strive to deliver world-class service and support by providing excellent customer service with fast response times for quote requests, application support and technical inquiries.

We are also a member of AWWA and co-author of the AWWA manual of water supply practices, M72, for the selection and operation of knife-gate valves.

Elite Valve currently maintains high stock levels for fast deliveries with over 190,000 sq ft of warehouse space in North America. All of our valves have a CRN.



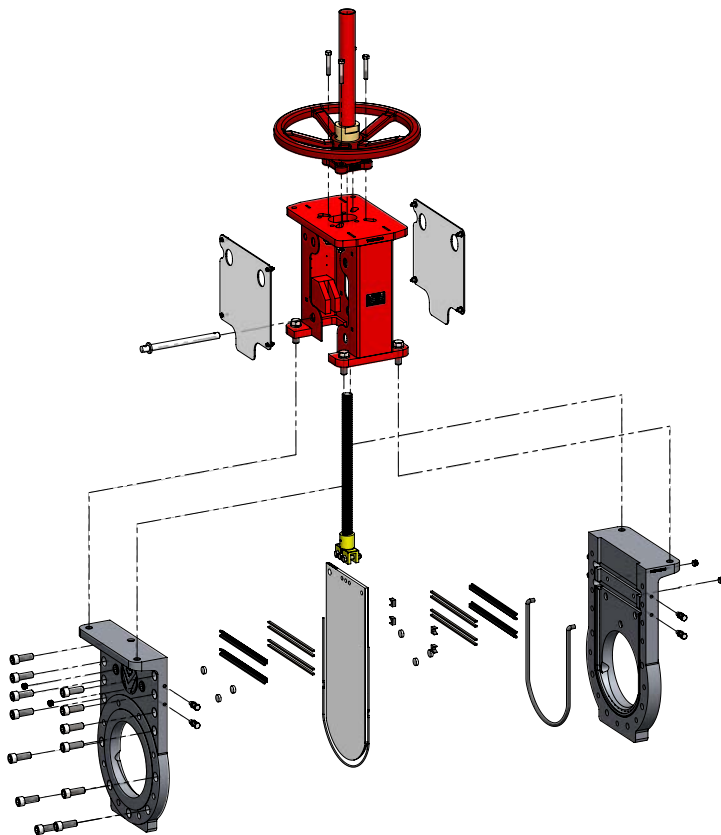
Engineered Solutions

Elite Valve offers engineered solutions to address the critical needs of specific applications. This helps ensure long lasting, reliable operation which increases productivity and profitability by reducing maintenance and downtime.

Our inside sales and technical support team consists of engineers and application specialists that will take the time to discuss your specific needs and collaborate with you to configure or design the best solution for your process application.

Our custom valves can be manufactured with:

- Steel and specialty alloys as well as titanium
- Hardened or coated gates and seats
- A wide variety of seat and packing materials
- Custom flange dimensions and patterns
- Large sizes up to 72"

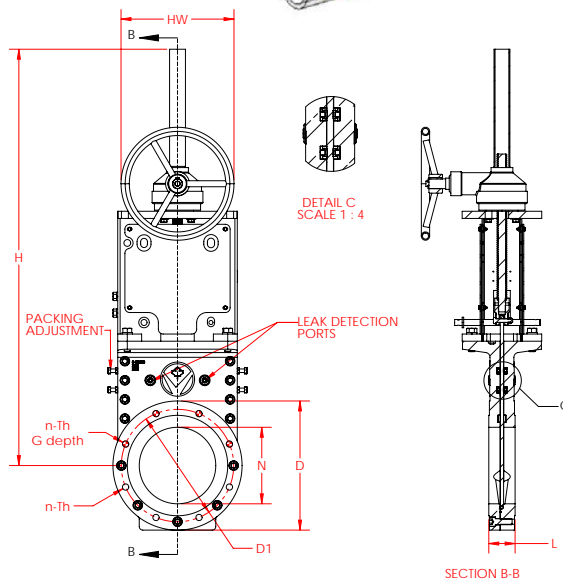
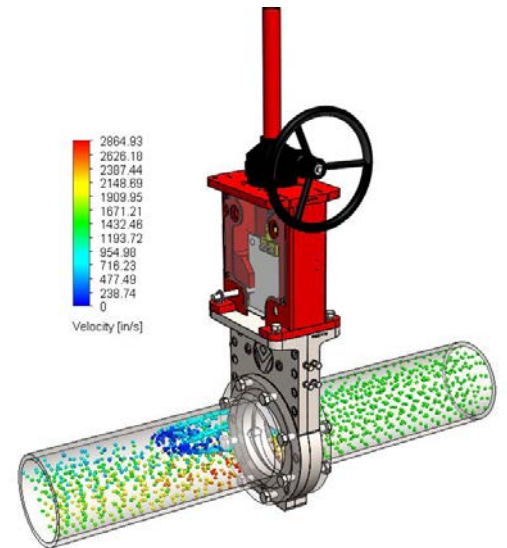
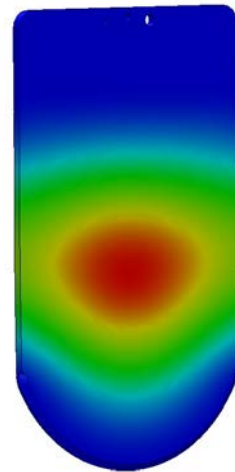




Utilizing flexible designs and our in-house manufacturing, Elite Valve can efficiently and effectively offer engineered valve solutions to suit almost any application.

As part of our engineering process, we utilise CFD software to calculate valve CV and pressure drop across the valve as well Finite Element Analysis to test strength and deformation of any custom designs.

For all our engineered solutions we offer certified drawings, 3D models, full submittal packages as well as copies of any applicable material test reports and certifications. We can also offer leak test and hydro test services, certificates of conformance and AIS compliance certificates on request.



Pulp & Paper



Mining



Power Generation



For over 25 years, Elite Valve has committed its efforts to the design and manufacturing of valves for critical and aggressive applications.



Wastewater



Water

We specialize in providing solutions for demanding services in the Pulp & Paper, Mining, Power Generation, Biofuel and Water & Wastewater treatment industries.



Biofuel

Knife Gate Valves

Applications: Industrial, Municipal

E5100

Light Process

General purpose valve with high performance features such as a perimeter seat for zero leakage, bidirectional shut-off and an optional transverse seal design with scrapers to prevent material buildup on the gate. Standard features include a lock-out pin for safety and ISO 5211 mounting for easy actuation. The E5100 conforms to AWWA C520 standards.



E5400

General Purpose

General purpose, unidirectional or bidirectional valve with resilient or metal seat options for industrial and municipal use. The E5400 conforms to AWWA C520 standards.



E5500

High Temperature

Unidirectional, Class 150 valve with Kalrez or metal seat options and graphite packing for high temperature applications.



E5700

Aggressive Process

Unidirectional, Class 150 valve with hardened seat and gate for high-wear applications. Optional serrated seat ring for scavenger/recycling service.



Knife Gate Valves

Applications: Slurries, Coarse Materials



E5200 Light Slurry

Robust bidirectional valve utilizing a perimeter seat design for light slurry applications.



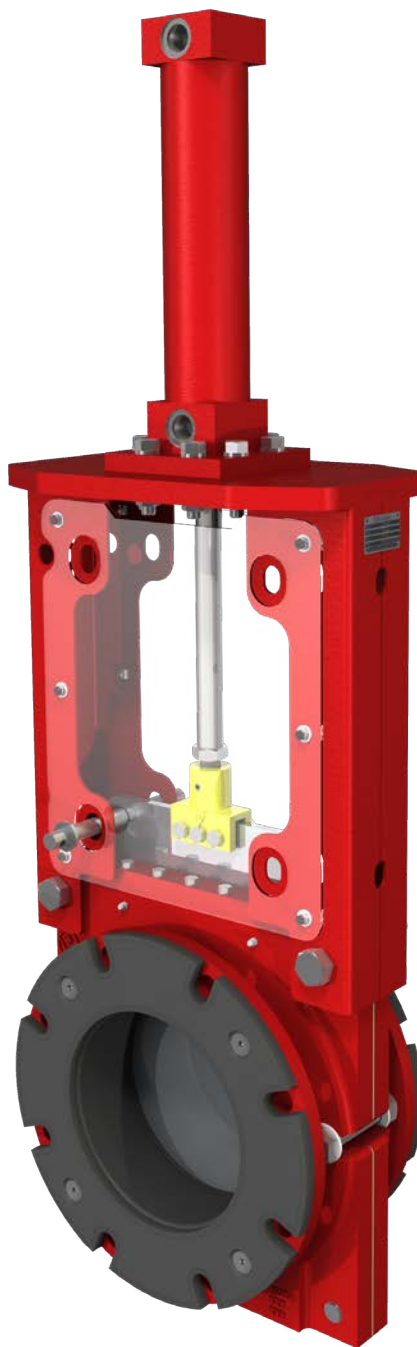
E5300 Heavy Slurry (narrow body)

Mining valve for abrasive applications that includes heavy slurries, rocks and other coarse materials.



E6300 High Pressure, Heavy Slurry

Class 300 mining valve for abrasive applications that includes heavy slurries, rocks and other coarse materials.



E5800 Heavy Slurry (wide body)

Mining valve for abrasive applications that includes heavy slurries, rocks and other coarse materials. Utilises steel reinforced seat rings to withstand harsh conditions that can be easily replaced in the field when required. Standard safety screens and lock-out pin help ensure safe operation and maintenance.

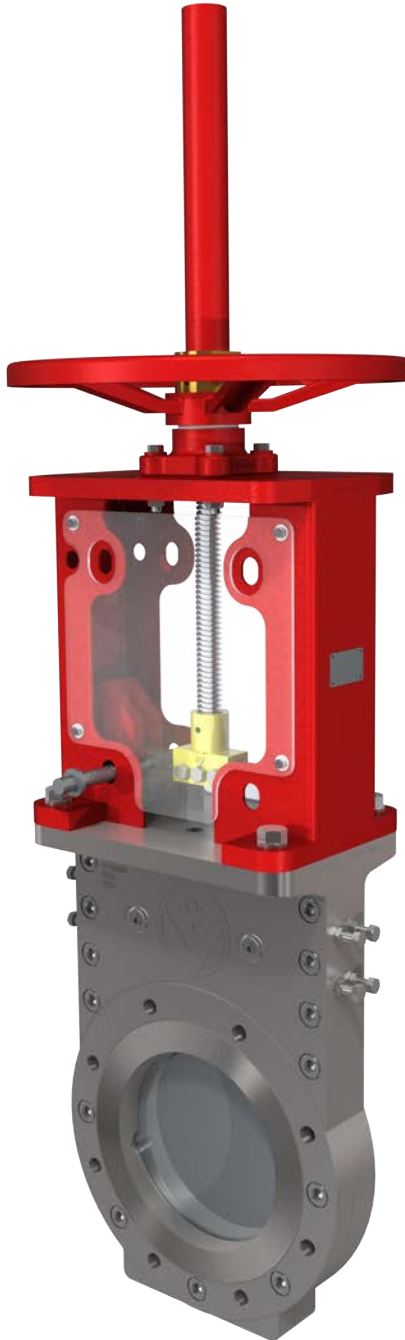
Knife Gate Valves

Applications: Aggressive, High-Pressure

E5600

High Performance

Highly customizable, high-performance Class 150 valve for liquids, gases, slurries, corrosive, and aggressive applications. Perimeter seat design with dual transverse seals and scrapers, flushing ports, and a secondary metal seat, provides bidirectional, zero leakage shutoff for in-line or dead-end service. A wide range of material options makes it the ideal solution for many applications.



E6600

High Performance

Class 300 variant of high-performance valve for liquids, gases, slurries, corrosive and aggressive applications.



E7600

High Performance

Class 600 variant of high-performance valve for liquids, gases, slurries, corrosive and aggressive applications.



DBB

Double Block and Bleed

Highly customizable, high-performance Class 150/300/600 double block and bleed valve that meets MSS-SP 152 standards.



Knife Gate Valves

Applications: Slurries, Solids, Powders



E5900 Urethane Lined

Excellent for liquid applications or for abrasive solutions containing fine particles.



E9600 O-port

General purpose, through conduit valve for industrial applications with resilient or metal seat options and flushing ports.



E9700 High Performance O-Port

Highly customizable, high performance, through conduit valve for industrial applications with resilient or metal seat options and flushing ports.



E9800 High Performance O-Port

Highly customizable, high performance, through conduit valve with transverse seal design for static columns and high-density applications. Utilizes transverse seals and scrapers for increased reliability. A wide range of material options makes it the ideal solution for many applications.



Butterfly Valves

High Performance

Double-offset design with RTFE seat provides reliable shut-off in high pressure, high temperature, and high cycle applications. Conical angled seat design maximizes flow and minimizes resistance for high Cv. Standard ISO 5211 mount for easy actuation. Available in carbon steel or stainless steel with wafer or lugged flange styles.



PTFE Lined

PTFE lined valve with single piece 316SS or PTFE coated shaft and disc provides excellent corrosion resistance for chemical applications including acids, chlorine, and alkalis. Standard ISO 5211 mount for easy actuation. Available with a ductile iron or stainless steel body in both wafer and lugged flange styles.



Light Slurry

Cartridge style EPDM seat and EPDM coated 304SS disc provide reliable operation and durability in applications for light slurries, coarse powders, and abrasive materials. Standard ISO 5211 mount for easy actuation. Ductile iron body is available in wafer or lugged flange styles.



Resilient Seat

Cartridge seat design provides a stable seating surface for reliable shut-off. Valve includes standard ISO 5211 mount for easy actuation. Available in wafer, lugged and U type flange styles.



Municipal

Conforms to AWWA C504 and is suitable for NSF 61 applications. Valve includes standard ISO 5211 mount for easy actuation. Available in sizes up to 72".



Ball Valves

B Series

Suitable for a full range of water, gas, steam, and chemical applications. Our stainless steel B-series ball valves are NACE compliant and available in 2 and 3 piece designs with threaded, tri-clamp or weld end connections. Both 2-way and 3-way configurations are available in manual or ISO 5211 mount versions. Sizes range from 1/4" to 4".



Trunnion

Available for up to Class 2500 service, our 2-piece cast and 3-piece forged trunnion ball valves are NACE compliant and fire-safe. High alloy body and trim materials are available as well optional seat materials to suit a wide range of applications in various industries. Sizes range from 2" to 42".



V-Port

Suitable for flow control applications and available in carbon steel or stainless for Class 150 and Class 300 service. Various ball and seat materials are also offered to suit a wide range of industrial applications. We offer complete assemblies with either electric or pneumatic actuation. Sizes range from 1/2" to 12".



Z Series

Suitable for a full range of water, gas, steam, and chemical applications. Our Z-series ball valves are available in carbon or stainless steel with flanged connections up to Class 600 service. Both 2-way and 3-way configurations are available in manual or ISO 5211 mount versions. Fire-safe and NACE compliant models are offered. Sizes range from 1/4" to 12".



Gate, Globe and Check Valves



Gate Valves

Carbon steel and stainless steel gate valves are available with threaded, flanged or weld end connections. Valves for Class 150/300/600/800 service are available as well as ductile iron valves that conform to AWWA C515 and suitable for NSF applications. Sizes range from 1/4" to 24".



Globe Valves

Carbon steel, stainless steel and cast iron globe valves with threaded, flanged, or weld end connections. Valves for Class 150/300/600/800 service are available. NACE compliant models are also offered. Sizes range from 1/4" to 24".



Check Valves

Swing check, double door, piston, and silent check valve designs are all offered in carbon steel, stainless steel, and iron materials. Valves for Class 150/300/600 service are available as well as ball check valves that conform to AWWA C508. Flanged foot valves with various screen types are also available.



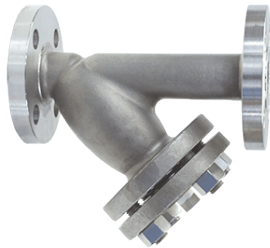


Plug Valves

Plug Valves

Our eccentric plug valve is perfect for municipal applications and conforms to AWWA C517.

Strainers



Y-Strainers

Elite Valve offers flanged, threaded and weld-end Y-strainers in carbon steel, stainless steel, or cast iron for up to Class 2500 applications.



Basket Strainers

Elite Valve offers flanged, threaded and weld-end basket strainers in carbon steel, stainless steel, or cast iron for up to Class 300 applications.

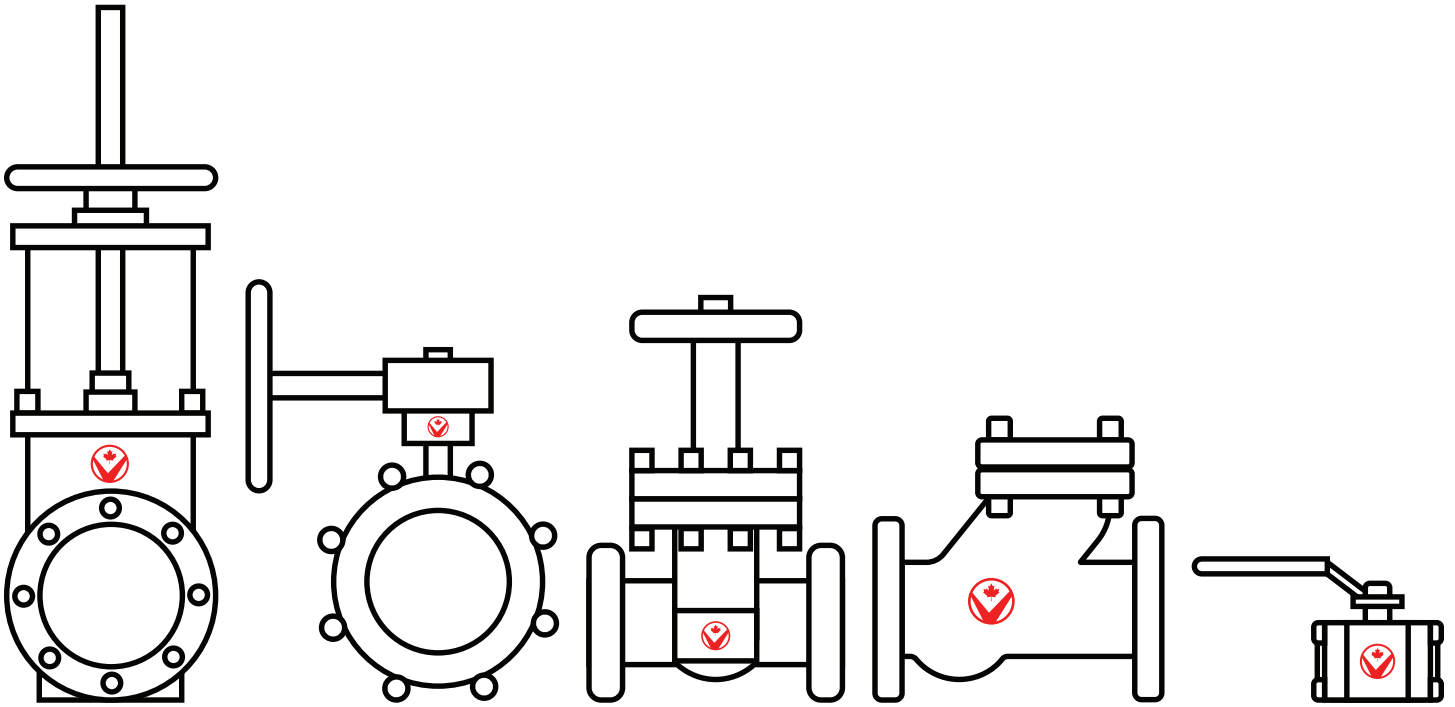


Actuation and Accessories

Valve Accessories

Elite Valve supplies all of the ancillary items needed for the mounting, actuation, control and feedback of process valves. We maintain extensive stock of actuators, mounting brackets, solenoid valves, filter/regulators, proximity sensors, switchboxes, and positioners.





Elite Valve

elitevalve.com

Our North American manufacturing and testing facility is located in Oakville, Ontario and houses over 190,000 sq ft of inventory.

Contact us at sales@elitevalve.com and our engineering team will work with you to address your process application needs.



2305 Wyecroft Road
Oakville, Ontario L6L 6R2



Local: (519) 756-3100
Toll-Free: (888) 339-7758



sales@elitevalve.com

